



# COLOR CATALOG



# ALCOBOND<sup>®</sup>

ALUMINUM  
COMPOSITE  
PANEL

# INTRODUCTION

## A GLOBAL NETWORK

ALCOBOND® has a widespread network of affiliates in major construction industry growth areas around the world, with licensed facilities delivering premium quality architectural facade products.

## OUR PRODUCT

ALCOBOND® aluminum composite panels are comprised of a modified mineral core sandwiched between two sheets of coated aluminum, sandwiched in a modified mineral core, produced in a continuous and integrated co-extrusion process.

ALCOBOND® has varied uses, which range from outdoor applications such as façade cladding, indoor applications such as interior decorative ceiling panels as well as display/signage applications.

The thickness of the aluminum skin, as well as the overall thickness of the aluminum composite panel can be customizable based on customer requirement.

## PREMIUM RAW MATERIALS

ALCOBOND® is formulated using the finest raw materials and manufactured with state-of-the-art technology, resulting in high-quality premium products that match or exceed industry benchmark standards. ALCOBOND® ensures compliance with the most stringent international standards such as ASTM (USA), NFPA (USA), LEED by USGBC (USA), EN (EU) and ISO. ALCOBOND® is guaranteed against potential defects, such as delamination, deformation, deglossing, and loss of color fidelity.

# FEATURES

## EXCELLENT TORSION STRENGTH

ALCOBOND® is manufactured using the latest machine technologies, undergoing constant and rigorous quality control checks throughout the entire production process.

ALCOBOND® offers excellent torsion and bending strength under heavy loads.

## INDUSTRY CERTIFIED

ALCOBOND® meets the most rigorous international standards, such as ASTM (USA), NFPA (USA), LEED by USGBC (USA), EN (EU) and ISO, that are met by certified independent testing agencies.

## STATE OF THE ART TECHNOLOGY

ALCOBOND® is manufactured using cutting-edge technology, with highly sophisticated automated machinery to minimize the risk of human error. We are invested in the quality of our products through continuous enhancement of our production processes.

## QUALITY ABOVE ALL

ALCOBOND® is manufactured under a rigorous quality control system, with continuous monitoring of the entire production process by a team of highly trained and experienced personnel. By using a unique coding system, each panel is individually tagged for quality checks throughout the entire process, initiating from pre-production and up until dispatch to our customers.

## CONSTANT INNOVATION

Under a production process that embraces constant innovation, we ensure maximum efficiency, continuous product innovation and the highest quality standards, ultimately leading to a product that surpasses the expectations of our customers.

## EXCEPTIONAL WEATHER RESISTANCE

The coating/finishes of ALCOBOND® aluminum composite panels consist of a fluorocarbon (PVDF) coating, with strong cohesion, alkali and acid resistance, pollution resistance and chalking resistance to Ultraviolet (UV) light. To ascertain this, ALCOBOND® provides a warranty of up to 20 years. High durable polyester finishes are also part of the ALCOBOND® range, as well as a range of customizable finishes that can be achieved based on customer requirement.

## SUPERB IMPACT RESISTANCE

ALCOBOND® has exceptional impact resistance, toughness and bending rigidity that can help our product survive in the harshest of environmental conditions.

## EASY PROCESSING AND INSTALLATION

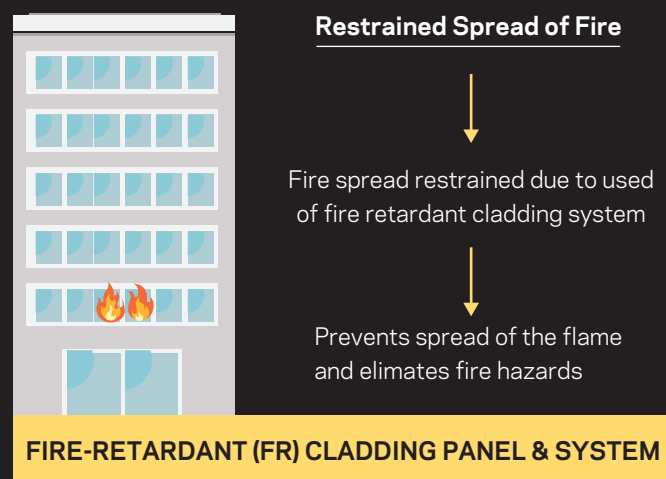
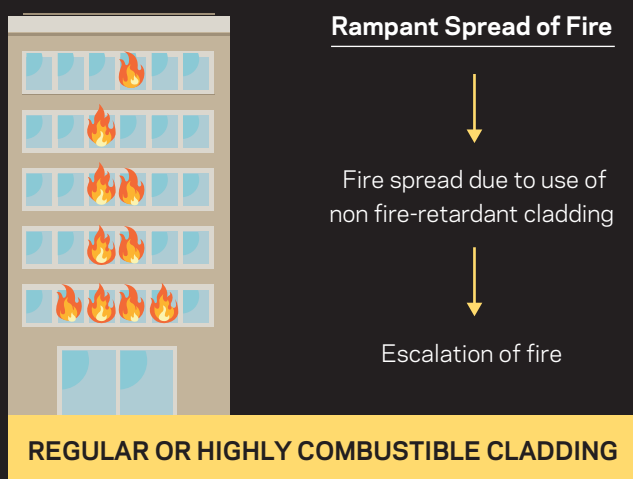
ALCOBOND® aluminum composite panels are lightweight and therefore easy to fabricate and install. Fabrication processes such as cutting, milling, planing, sliding, folding, and curving can easily be carried out using simple fabrication techniques.

## OUTSTANDING FIRE-RETARDANT CHARACTERISTICS

ALCOBOND® aluminum composite panels contain a fire-retardant core that is certified by Thomas Bell-Wright to meet the ASTM E84 Class A, ASTM D1929, EN 13501-1, ISO 1182 and NFPA 285 standards.

## EASY MAINTENANCE

The panel can be easily cleaned with water.



## ALCOBOND® ALUMINUM COMPOSITE PANEL FIRE RETARDANT (FR)

ALCOBOND® uses the highest standard materials to provide the finest quality fire retardant products that prevent the propagation of potential fire hazards.

## ALCOBOND® FIRE RETARDANT FAÇADE SYSTEM

Fire safety begins at the initial planning stage of the facade assembly system. ALCOBOND® fire retardant (FR) aluminum composite panels have undergone a large-scale fire propagation test as part of a façade assembly system to achieve optimum fire safety.

Prevention of fire is contingent on the design of the façade assembly system. Our team can assist you from the initial planning stage, up until the final design of the façade system.

It is crucial to not only look at the fire safety of the aluminum composite panels, but also the assembly systems that are put in place, thus giving the applicator an entirety of the situation as opposed to just one aspect.

ALCOBOND® has been certified with the NFPA-285 Fire Certification, that ensures fire safety of the entire façade assembly system.



# METALLIC

The allure of the metallic finish lies in its vivid impressions, which come to full allure in varying light conditions and viewing angles.



Platinum - ALC 002



Silver Fox - ALC 1045



Pure Silver - ALC 001



Aluminum Silver - ALC 1245



Supernova Silver - ALC 126



Galaxy Silver - ALC 080



Gunmetal - ALC 003



Smoky Quartz - ALC 1252



Steel Grey - ALC 1063



Charcoal Grey - ALC 026



Mystic Shadow - ALC 1107



Black Diamonds - ALC 117

A wider range of colors, paint specifications and customizations are available. The colors shown above are only indicative; in actual production there will be marginal color variations as per universal standards. To avoid color variations, complete project quantity should be ordered in one go. Minimum order quantity is applicable for all colors.



# METALLIC



Pearl White - ALC 070



Moonstone - ALC 118



Champagne - ALC 004



Sand Silver - ALC 007



Smoky Topaz - ALC 960



Antique Bronze - ALC 1156



Burnished Gold - ALC 008



Burnished Copper - ALC 009



Desert Rose - ALC 015



Glacier Green - ALC 013

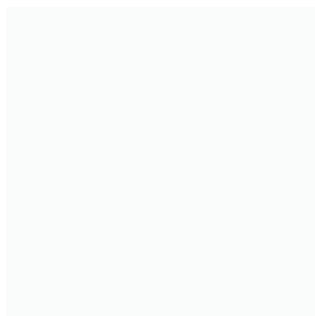


Zephyr Blue - ALC 014

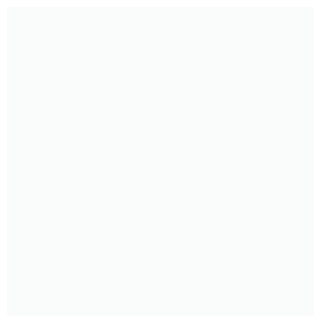
A wider range of colors, paint specifications and customizations are available. The colors shown above are only indicative; in actual production there will be marginal color variations as per universal standards. To avoid color variations, complete project quantity should be ordered in one go. Minimum order quantity is applicable for all colors.

# SOLID

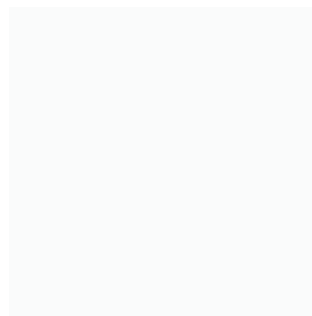
Solid colors are the perfect choice for a distinct and uniform appearance. Whether you prefer bright blue, vivid red, or soft white, this series delights in its vast range of colors.



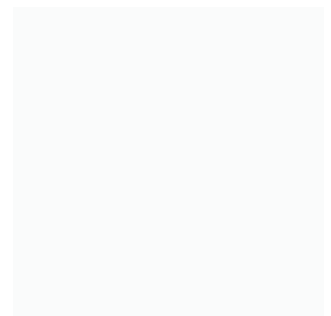
Crisp White - ALC 1234



Reflective White - ALC 1022



Glossy White - ALC 091



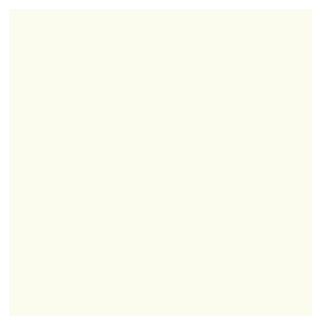
Veneer White - ALC 065



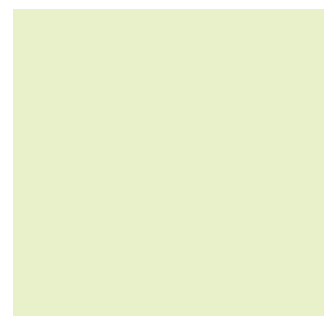
Pure White - ALC 016



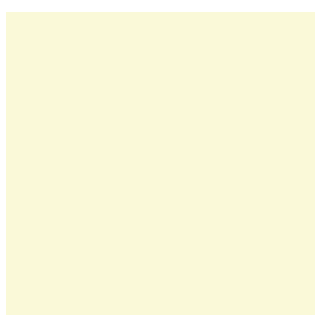
Parchment White - ALC 1137



Eggshell - ALC 017



Ivory - ALC 031



Cream - ALC 942



Bone White - ALC 018



Canvas - ALC 1138

A wider range of colors, paint specifications and customizations are available. The colors shown above are only indicative; in actual production there will be marginal color variations as per universal standards. To avoid color variations, complete project quantity should be ordered in one go. Minimum order quantity is applicable for all colors.

# SOLID



Pebble Grey - ALC 1236



Spanish Grey - ALC 1237



Polished Grey - ALC 1151



Dusty Grey - ALC 1238



Slate Grey - ALC 025



Graphite - ALC 1239



Coal Black - ALC 1240



Black Olive - ALC 1241



Midnight Black - ALC 027



Prussian Blue - ALC 077



Royal Blue - ALC 023



Cobalt Blue - ALC 047



Azure Blue - ALC 040



Wedgewood Blue - ALC 039



Powder Blue - ALC 1243



Marine Blue - ALC 913



Verdigris - ALC 037



Teal Green - ALC 022



Faux Green - ALC 1034



Forest Green - ALC 038

A wider range of colors, paint specifications and customizations are available. The colors shown above are only indicative; in actual production there will be marginal color variations as per universal standards. To avoid color variations, complete project quantity should be ordered in one go. Minimum order quantity is applicable for all colors.



# SOLID



Shamrock Green - ALC 035



Lime Green - ALC 034



Lemongrass - ALC 201



Dijon Yellow - ALC 1039



Amber Yellow - ALC 1032



Sunburst Yellow - ALC 019



Portland Orange - ALC 041



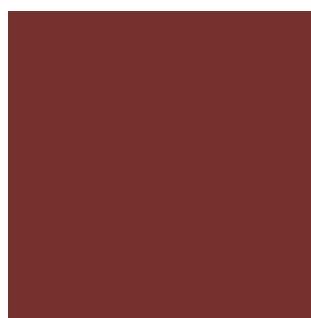
Clay Brown - ALC 1244



Red Lacquer - ALC 112



Carnelian Red - ALC 024



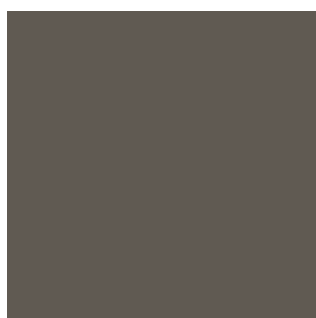
Brick Red - ALC 021



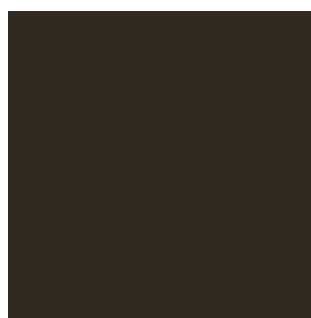
Plum - ALC 1096



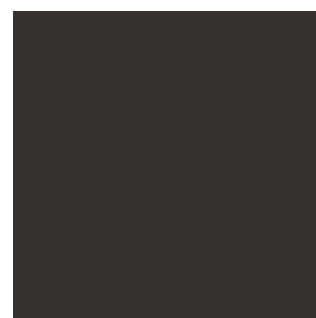
Driftwood - ALC 032



Taupe - ALC 1119



Coffee Brown - ALC 081



Dark Brown - ALC 962



Georgian Rose - ALC 042



French Lilac - ALC 127



Brinjal - ALC 1044

# TEXTURED

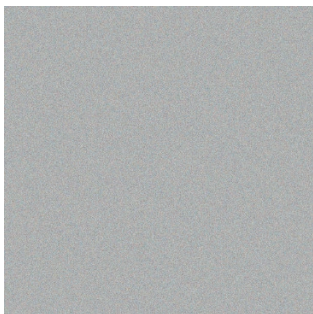
This series brings a 3D element into the fold, awakening the sensory and visual experience, adding character and depth to the surface, giving a spectacular treat to its viewers.



Stucco White - ALC 2102



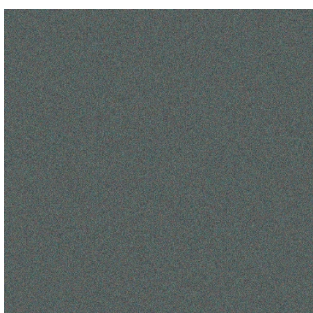
Oat - ALC 2103



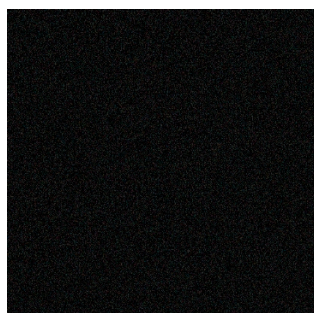
Cool Grey - ALC 2104



Quarry Grey - ALC 2105



Magnetite - ALC 2106



Black Emery - ALC 1043



# BRUSH

The brush series is timeless, emulating the aesthetics of classic metals such as gold, silver and copper. It offers a blend between refined and raw, creating a strong architectural statement.



Brushed Silver - ALC 011



Brushed Steel - ALC 2016



Brushed Bronze - ALC 2014



Brushed Gold - ALC 012



Brushed Copper - ALC 2013



Brushed Oceanic - ALC 2015

A wider range of colors, paint specifications and customizations are available. The colors shown above are only indicative; in actual production there will be marginal color variations as per universal standards. To avoid color variations, complete project quantity should be ordered in one go. Minimum order quantity is applicable for all colors.



# ANODIZED

Revel in the elegance of the anodized series that shines in all its glory, offering unlimited creative opportunities to designers and architects. In this series, an anodic layer beautifully finishes the aluminum surface to create a smooth but glistening effect.



Silver Mirror - ALC 010

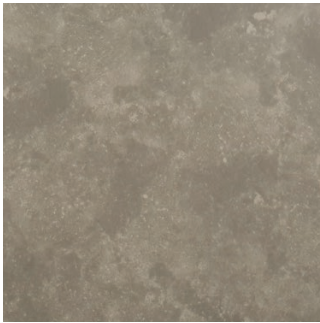


Gold Mirror - ALC 097



# ROCK

The rustic rock series is modeled on natural stones, aggregates and elements. Through the use of special pigments, the aluminum surface is dressed up to emulate nature at its finest, whilst preserving the functionality of the metal.



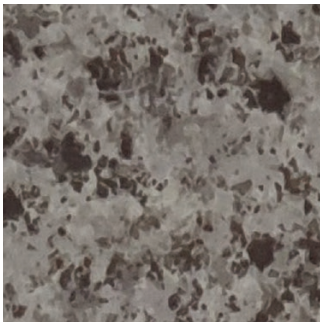
Moon Rock Concrete - ALC 2705  
scaled-down 1:5



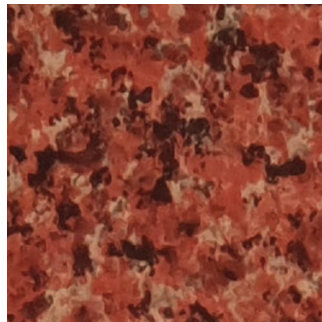
Periwinkle - ALC 2703  
scaled-down 1:5



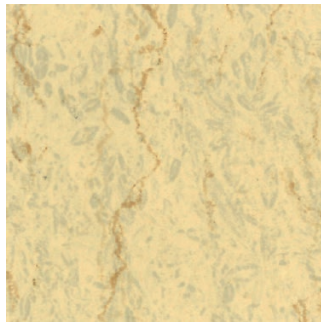
Blue Concrete - ALC 2805  
scaled-down 1:5



Riverbed Granite - ALC 2704



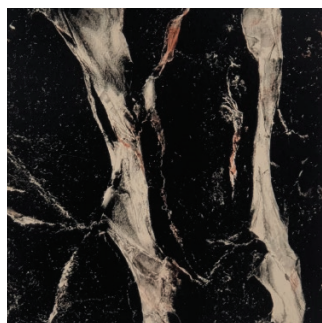
Himalayan Granite - ALC 2701



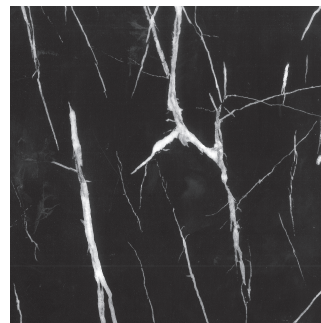
Amarillo Gold Marble - ALC 028



Trout Brown - ALC 2029  
scaled-down 1:5



Nebula Black - ALC 2702  
scaled-down 1:5



Black Ice - ALC 1149  
scaled-down 1:5

Images are scaled-down where indicated. A wider range of colors, paint specifications and customizations are available. The images shown above only give an indication of the colors and patterns; in actual production there will be marginal color variations as per universal standards. To avoid color variations, complete project quantity should be ordered in one go. Minimum order quantity is applicable for all colors.



# WOODGRAIN

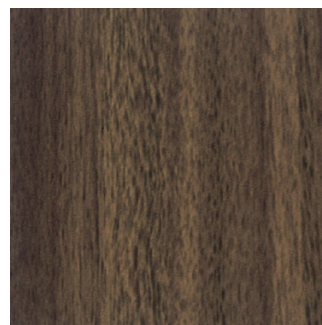
The woodgrain series beautifully merges aesthetics with functionality. A special coating creates a spectacular range of wooden finishes on the aluminum surface, providing superb structural integrity and exceptional weather resistance.



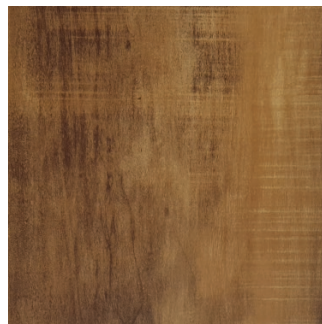
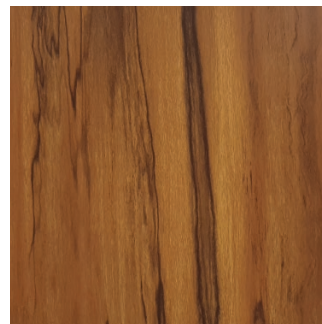
Walnut - ALC 045



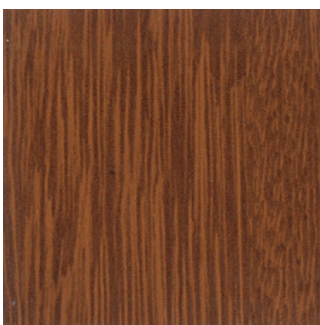
Red Oak - ALC 060



Wenge - ALC 046

Beli - ALC 2806  
scaled-down 1:5Greywood - ALC 2807  
scaled-down 1:5Reclaimed Koa - ALC 2809  
scaled-down 1:5Acacia - ALC 2808  
scaled-down 1:5

Veneer - ALC 1112



Bulletwood - ALC 1061

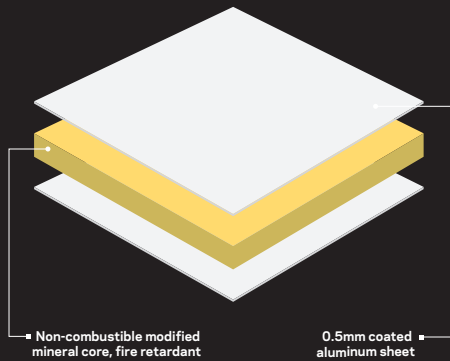


Mahogany Wood - ALC 1215



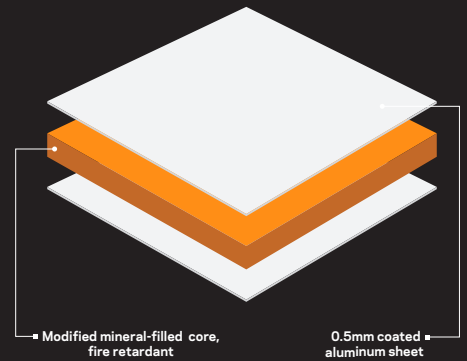
# CROSS-SECTION OF ALCOBOND® ALUMINUM COMPOSITE PANEL

ALCOBOND® A2



BS EN 13501-1:2018 - A2-s1,d0

ALCOBOND® FR















BS EN 13501-1:2018 - B-s1,d0

## SPECIFICATIONS

<b>WIDTH</b>	<b>1000mm, 1250mm, 1500mm</b>
<b>AVAILABLE PANEL THICKNESS</b>	<b>4mm, 5mm, 6mm</b>
<b>ALUMINUM SKIN THICKNESS</b>	<b>0.4mm, 0.5mm</b>
<b>AVAILABLE LENGTH</b>	<b>Upto 8000mm</b>
<b>ADHESIVE FILM</b>	<b>High Strength Bonding Adhesive Film</b>
<b>CORE</b>	<b>Fire Retardant Modified Mineral Core</b>
<b>COLORS</b>	<b>Metallic, Solid, Textured, Brush, Anodized, Rock &amp; Woodgrain</b>
<b>COATING</b>	<b>Kynar 500 &amp; Hylar 5000 PVDF, Polyester Metallic and High Gloss High Durable Polyester</b>
<b>SPECIAL REQUIREMENTS</b>	<b>Custom sizes and color finishes available and conditional to fulfilling minimum order quantity requirements</b>

## APPLICATIONS

-  External Wall Cladding
-  Curtain Wall, Internal Wall Finishes
-  Building Arches, Fascias, Soffits
-  Circular Columns, Spandrels, Beam Wraps
-  Dados, Wall Canopies
-  High stress usage areas
-  Balustrades, Elevators
-  Interior Partitions, Interior Doors, Ceiling Panels
-  Kitchen Cabinets, Countertops, Cupboards, Benchtops
-  Public/Commercial Display Walls, Advertisement Billboards
-  Shop Signboards, Showroom Finishes
-  Kiosk Panels, Display Cases, Exhibition Stands

# TECHNICAL SPECIFICATIONS

## PHYSICAL PROPERTIES

Test Item	ALCOBOND® FR	ALCOBOND® A2
Coating Thickness	≥ 25 μm	≥ 25 μm
Gloss Deviation	≤ 10	≤ 10
Pencil Hardness	≥ H	≥ H
Flexibility	≤ 2T	≤ 2T
Impact Resistance	1 kg-100 cm, no peel off, no cracks	1 kg-100 cm, no peel off, no cracks
Film Adhesion	no loss of adhesion	no loss of adhesion
Abrasion Resistance	≥ 50 L/mil	≥ 50 L/mil
Hot Water Resistance	No change	No change
Acid Resistance	No change	No change
Alkali Resistance	No change	No change
Oil Resistance	No change	No change
Solvent Resistance	No change	No change
Salt Spray Resistance	Minimum rating of 7 on scribe and minimum blister rating of 8	Minimum rating of 7 on scribe and minimum blister rating of 8
Accelerated Weathering	No failure	No failure

## MECHANICAL PROPERTIES

Test Item	ALCOBOND® FR	ALCOBOND® A2
Peel Strength	13.64 N/mm	12.1 N/mm
Drum Peel Strength	485 N-mm/mm	103 N-mm/mm
Bending Strength	110 MPa	130.9 MPa
Bend Elastic Module	20538 MPa	21200 MPa
Tensile Strength	36 MPa	40 MPa
Punch Shear Strength	26.01 MPa	22.95 MPa

## THERMAL PROPERTIES

Test Item	ALCOBOND® FR	ALCOBOND® A2
Thermal Expansion	93.9 μm/m°C	94.4 μm/m°C
Thermal Conductivity	0.5088 W/mK	0.5232 W/mK
Heat Deflection Temperature	115 °C	119 °C

## FIRE PERFORMANCE

Test Item	ALCOBOND® FR	ALCOBOND® A2
Surface Burning (ASTM E84)	Class A (FSI: 0, SDI: 0)	Class A (FSI: 0, SDI: 15)
Self-ignition Temperature (ASTM D1929)	466 °C	471 °C
Fire Reaction (EN 13501-1)	Class B-s1,d0	Class A2-s1,d0
Fire Resistance (NFPA 285)	PASSED	PASSED



**ALCOBOND®**  
Aluminum Composite Panel



alcobond.com

## **HEADQUARTERS UNITED ARAB EMIRATES**

**t:** +9714 347 5131

**e:** info@rmk.ae

**a:** rmk industries, dubai industrial city, dubai, uae

---

### **KINGDOM OF SAUDI ARABIA**

**t:** +966 53 524 2439

**e:** info@rmk.ae

**a:** rmk industries, dammam, ksa

### **OMAN**

**t:** +968 9749 5969

**e:** info@rmk.ae

**a:** rmk industries, muscat, oman

### **BAHRAIN**

**t:** +973 3420 7913

**e:** info@rmk.ae

**a:** khan global trading, manama, bahrain

### **KUWAIT**

**t:** +965 2481 7923

**e:** goldenlockco@gmail.com

**a:** golden lock company, safat, kuwait

### **QATAR**

**t:** +974 6600 4599

**e:** info@rmk.ae

**a:** rmk trading, doha, qatar

### **EGYPT**

**t:** +20 226 327 529, +20 102 798 5950

**e:** info@rmk.ae

**a:** khan global trading, cairo, egypt

### **YEMEN**

**t:** +967 1 606 6899

**e:** alawady@y.net.ye

**a:** alawadhi trading, sanaa, yemen